

Overview

If you are away from a DCRI facility and you need to access DCRI/Duke network resources, the recommended remote access option with a PC (desktop or laptop) is **AnyConnect** from Cisco Systems, a Desktop application in the DCRIconnect family. This quick reference card (QRC) summarizes how to install Cisco AnyConnect on your personal Windows computer.

About AnyConnect

With this Virtual Private Network (VPN) application, you can use your own personal Windows computer to access remotely:

- Resources on the DCRI Intranet and protected web applications and websites, such as EPM Time Card, secure SharePoint sites, and shared network drives.
- (if applicable) Access a Virtual Machine (VM), or a DCRI-issued Windows computer powered on in a DCRI facility.

Requirements

To access this service, you must have:

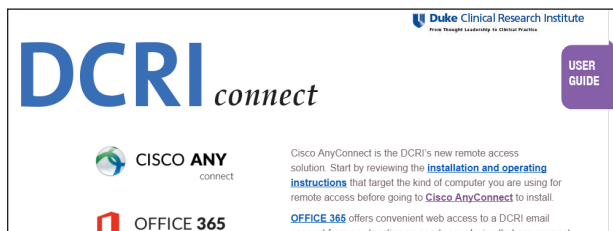
- Windows 7, 8, 8.1, or 10.
- A high-speed Internet connection (wired or wireless).
- A valid Duke NetID and working password.
- Multi-Factor Authentication (MFA) enabled. For more information, see <http://library.dcri.duke.edu/dtmi/IT/Remote/Q/MFA.pdf>.

Installing the Client Software

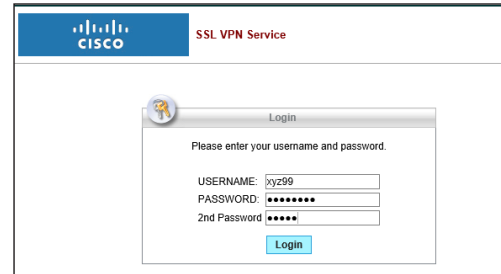
Do *not* use Windows Internet Explorer 11. The following shows the steps completed on Google Chrome.

Important! The installer first attempts to load the client software automatically. It is *normal* for this automatic process to fail, and you will proceed with a manual installation.

- 1 Point Chrome to connect.dcri.org.
The DCRIconnect portal page opens.



- 2 Click the **Cisco AnyConnect** icon, name, or link.
The Cisco SSL VPN Service page appears.

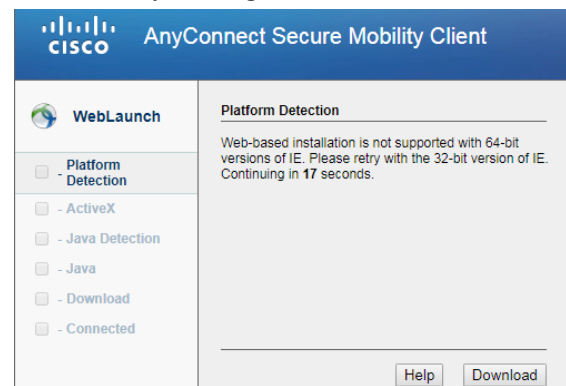


- 3 Enter your NetID as **Username**, and then enter your network **Password**.
- 4 In the **2nd Password** field (sometimes seen as **Security Key**), enter your Multi-Factor Authentication (MFA):

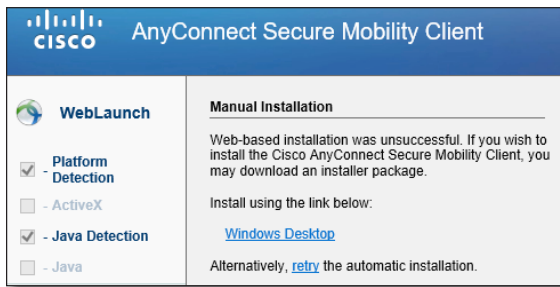


Enter into this field a **Duo Mobile** app code (by tapping the app's key icon), YubiKey code, or an unused SMS (Short Message Service) code. Otherwise, you are expected to enter one of the following *words*:

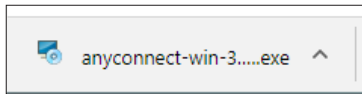
- Enter **phone** to have the system call the top phone you listed on the Duke Office of Information Technology (OIT) MFA website. You can enter **phone2** or **phone3** to have the system call the second or third phone on your list.
 - Enter **push** to have the system push notification to the Duo Mobile app on the top smartphone or tablet you listed in the OIT website. You can enter **push2** or **push3** to send to the second or third device on your list.
 - Enter **sms** to have the system send some passcodes. Enter one of them into this field to authenticate this session.
- 5 Click **Login** and (if needed) complete your MFA verification.
 - 6 On the Platform Detection page, go ahead and interrupt the countdown by clicking the Download button.



- 7 When the following message appears, click the **Windows Desktop** link.



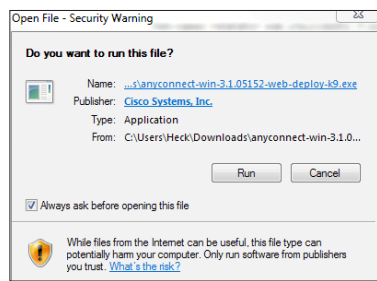
The system loads the the .exe file for the application into your



Downloads folder. You can follow the process in the lower left part of the gray bar across the bottom of the screen.

- 8 When the download is complete, open this .exe file.

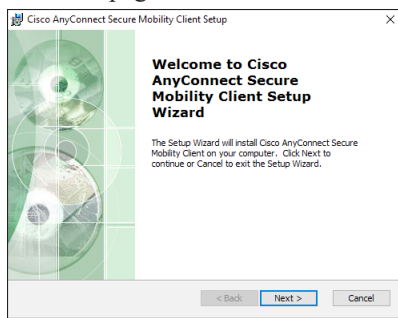
A confirmation message appears.



- 9 This is a good time to close the browser window: it is no longer needed and can get in the way.

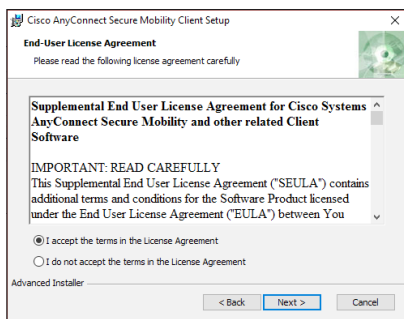
- 10 Click **Run**.

The Welcome page to the installation wizard appears.



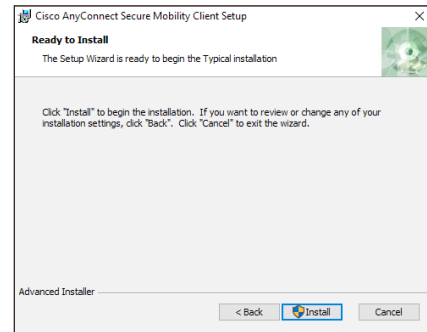
- 11 Click **Next**.

The End User License Agreement page appears.



- 12 Read the agreement, select the **I accept the terms in the License Agreement** radio button, and then click **Next**.

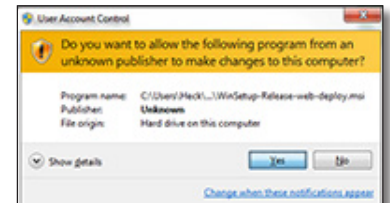
The Ready to Install page appears.



- 13 Click **Install**.

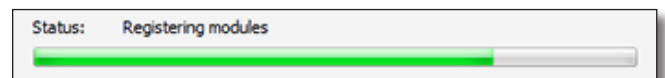
The installation process will take several minutes.

- 14 If a **User Account Control** message appears, click **Yes**.



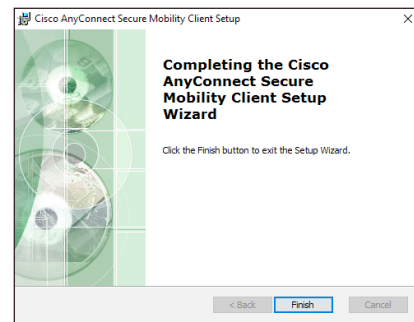
Important! This message could be hiding behind a window.

A bar shows the progress of the install.



Note: If a message appears, telling you a software component failed to register, click **Retry**.

- 15 When the final page appears, click the **Finish** button.



The installation wizard closes.

- 16 Proceed to the *Cisco AnyConnect: Fundamentals on a Non-DCRI Windows Computer* QRC.